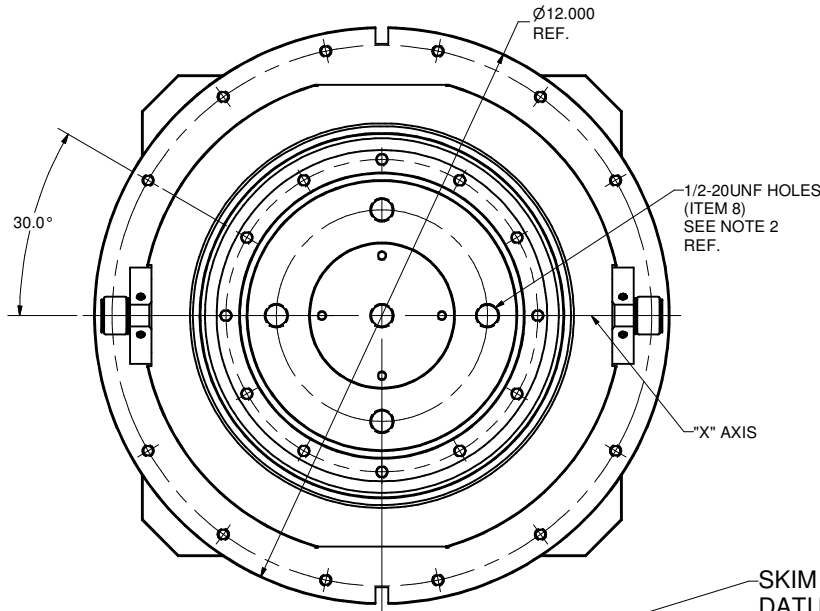
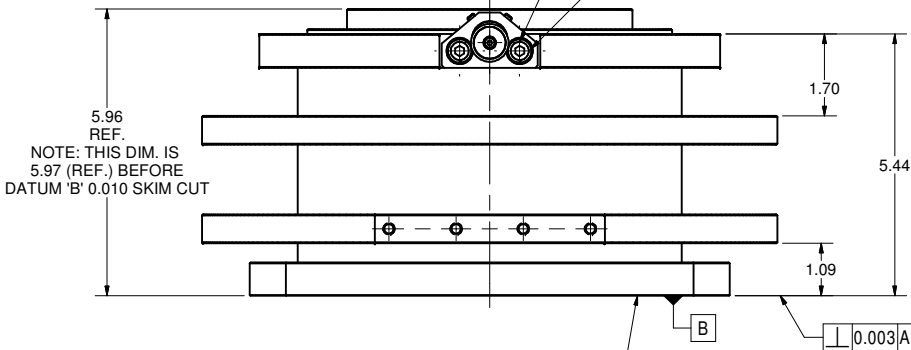
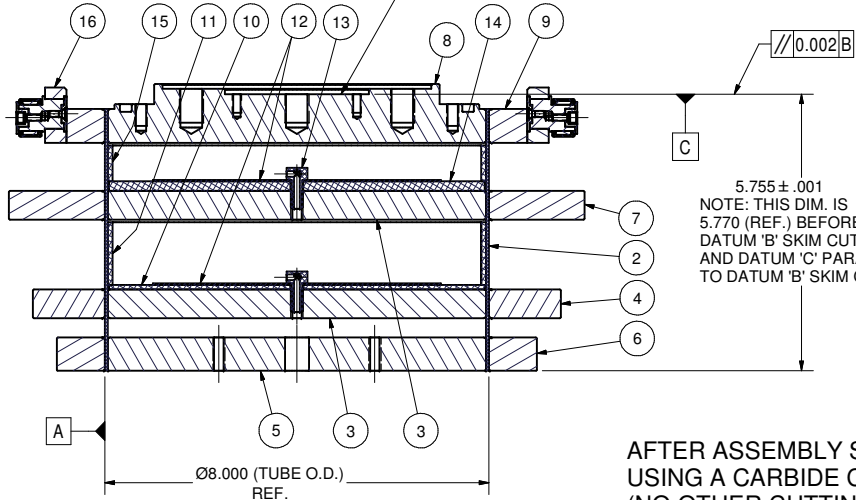


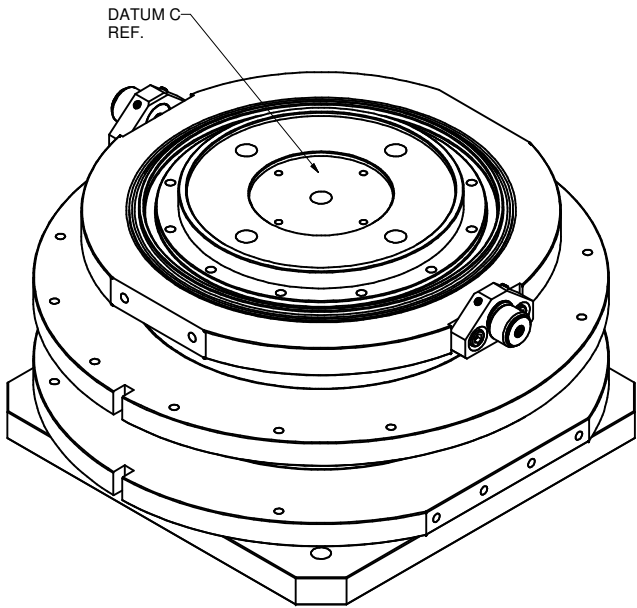
REVISIONS				
SYM.	ZONE	DESCRIPTION	DATE	APP.
A		PARTS ITEM 4 AND 7 MODIFIED. NEW SLOTS ON THEM SHOWN.	10/2/06	VM
B		ADDED SKIM CUT NOTES. DELETED SOME FEATURE CONTROL FRAMES AND ADDED DATUM 'C'. TMK	6/25/07	EPC



SKIM CUT POCKET (DATUM 'C') AFTER SKIM CUT OF DATUM 'B' FOR 0.002" PARALLEL TO DATUM 'B' AND 5.755±0.001 DIMENSION USING ISOPROPYL ALCOHOL AS LUBRICANT. (NO OTHER CUTTING FLUID IS ALLOWED)

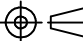




AFTER ASSEMBLY SKIM CUT DATUM 'B' FIRST TO CLEAN UP PARTS 6,2 AND 5 USING A CARBIDE CUTTER AND ISOPROPYL ALCOHOL AS LUBRICANT. (NO OTHER CUTTING FLUID IS ALLOWED) REMOVE AS LITTLE MATERIAL AS POSSIBLE. NO MORE THAN 0.010" MAX.



Release of final PO version for Meyer Tool - June 27, 2007.

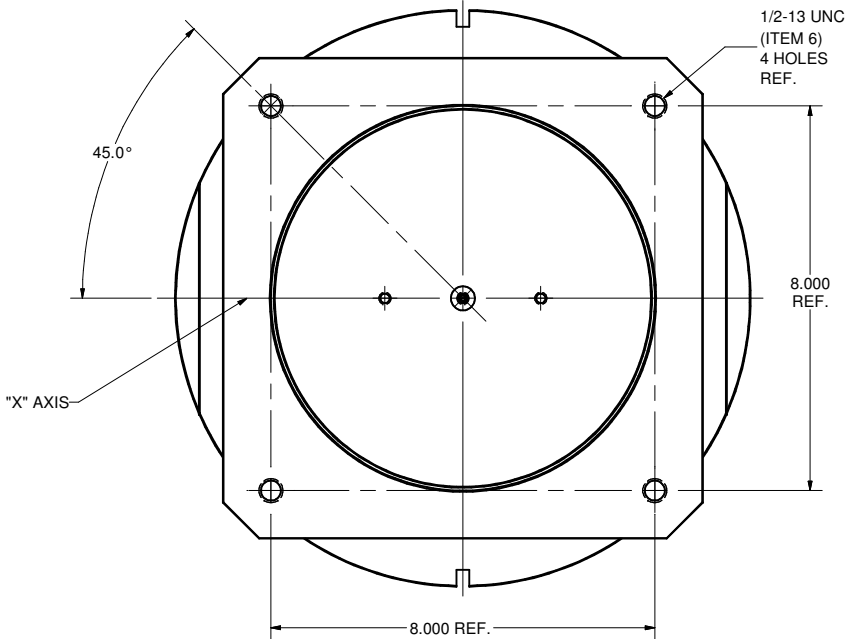
18	-	1/4 Spring Lock Washer	4		316 St. Stee	
17	-	1/4-28 x 5/8 Sock. Hd. Cap Screw	4		316 St. Steel	
16	7110-001 (SH. 5)	POST ROLLER SUBASM	2			
15	7110-001 (SH. 4)	POST 80K INSULATION RING	1			
14	7110-001 (SH. 4)	POST 80K INSULATION DISK	1			
13	7110-001 (SH. 3)	POST INSULATION SCREW	2			
12	7110-001 (SH. 3)	POST INSULATION WASHER	2			
11	7110-001 (SH. 4)	POST 5K INSULATION RING	1			
10	7110-001 (SH. 4)	POST 5K INSULATION DISK	1			
9	7110-001 (SH. 3)	Post_300K_ring	1			
8	7110-001 (SH. 4)	POST 300K DISK	1			
7	7110-001 (SH. 3)	POST 80K RING	1			
6	7110-001 (SH. 2)	POST 2K RING	1			
5	7110-001 (SH. 2)	POST 2K DISK	1			
4	7110-001 (SH. 3)	POST 5K RING	1			
3	7110-001 (SH. 2)	POST 5&80K DISK	2			
2	7110-001 (SH. 2)	POST SUPPORT TUBE	1			
1	7110-001 (SH. 1)	8" POST SUPPORT ASSEMBLY	X			

	ITEM	DWG. NO.	DESCRIPTION	G1	G2	G3	REMARKS	REV.
				QUANTITY				
PRINT DISTR.	PLOT DATE: 6/27/2007 CAD FILE NAME: 7110-001.idw							
D	7110-001 SH. NO. 1 OF 5	CR-1	UNLESS OTHERWISE SPECIFIED: DIMENSIONS ARE IN INCHES; TOLERANCES ON: .0 ± .02 .00 ± .010 .000 ± .005 FRACTIONS ± 1/32 ANGLES ± 0.5° ALL SURFACES 	 CORNELL UNIVERSITY Floyd R. Newman Laboratory Ithaca, NY 14853				
				REV. B	CHECKED BY: VM	DRAWN BY VGW	DRAWN FOR MUL	DATE 07/30/06
	APPROVED BY: ML							

FOR MACHINING LUBRICANT USE ONLY
ALKALINE DETERGENT LUBRICANT CIMSTAR 40
OR EQUIVALENT APPROVED BY CORNELL LEPP

1 8" POST SUPPORT ASSEMBLY

FILE NAME: 7110-001
SHEET NO.: 1
DFT. SCALE: 1:2
MATERIAL:
QTY: 2 PER EACH HGRP SECTION
NOTES: 1. FOR POSSIBLE ASSEMBLY FIXTURES AND SEQUENCE SEE 7110-001T
2. AXIS OF 1/2-20UNF HOLES (ITEM 8) MUST LOCATE ON "X" AXIS WITHIN 0.2 DEG.



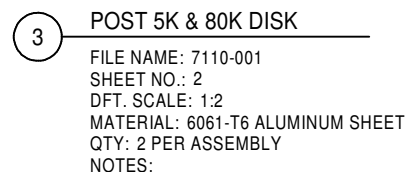
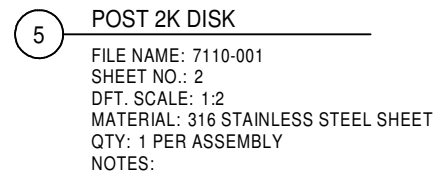
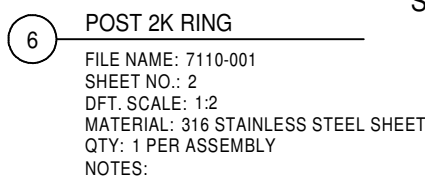
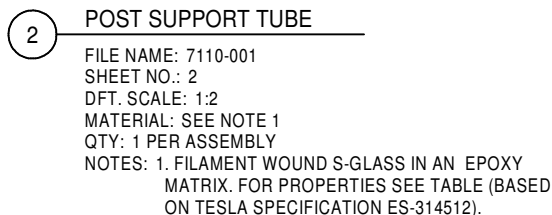
Temperature Range: 305 K - 1.8 K
Relative Humidity: 10% - 90%
Pressure Range: Atm - 10E-6 Torr
Radiation Dosage: 10E8 Rad (20 yrs)

E1	27.6 GPa (min)
ν 1	0.10 - 0.30
σ 1	± 275 MPa (min, ult)
E2	13.8 GPa (min)
ν 2	0.10 - 0.30
σ 2	± 170 MPa (min, ult)
E3	6.9 GPa (min)
ν 3	0.10 - 0.30
σ 3	-200 MPa (min, ult)
G12	2.6 GPa (min)
τ 12	± 70 MPa (min, ult)

```
k1 0.0081 (max)
k2 0.0081 (max)
k3 non-critical
```




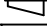


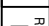


k1	0.0036 (max)
k2	0.0036 (max)
k3	non-critical

```
k1 0.0009 (max)
k2 0.0009 (max)
k3 non-critical
```



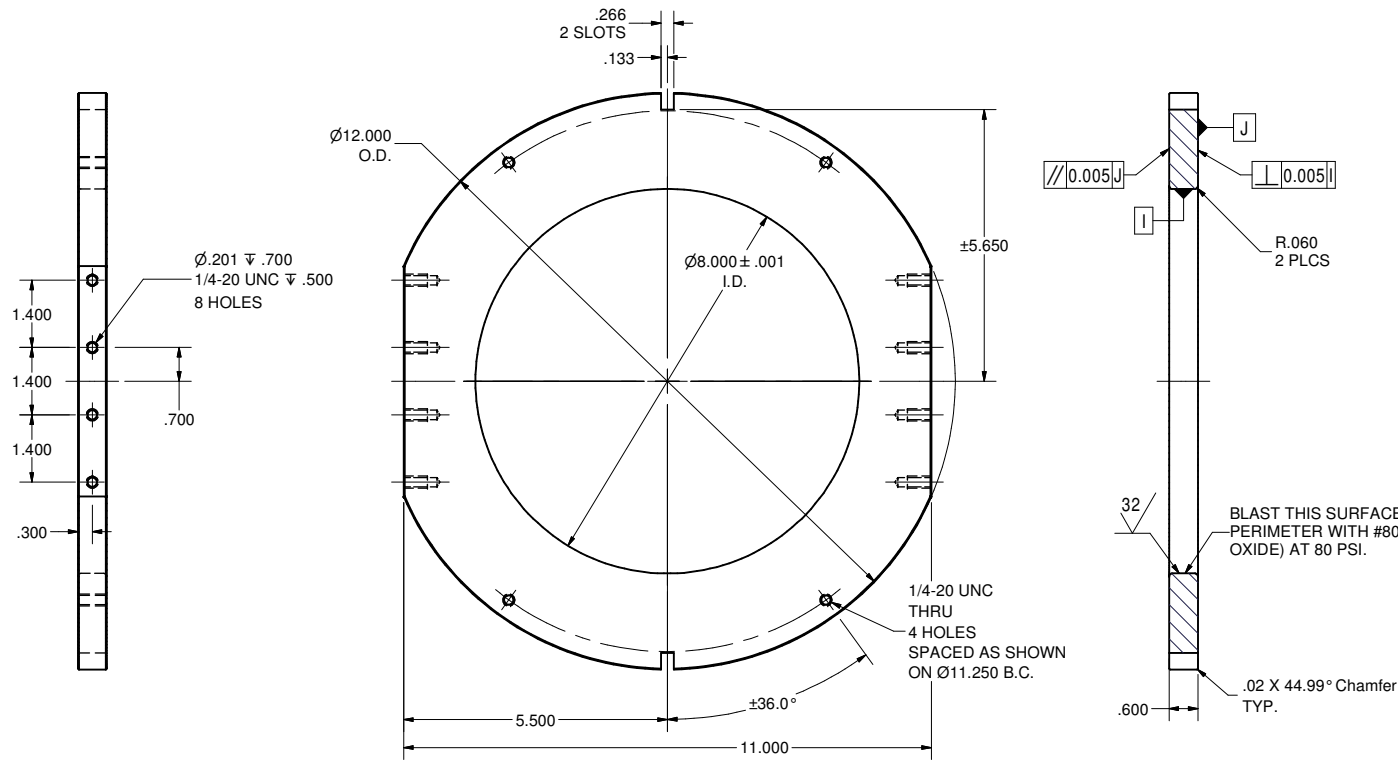
Release of final PO version for Meyer Tool - June 27, 2007.

REVISIONS				
SYM.	ZONE	DESCRIPTION	DATE	APP
A		PART ITEM 6: DIMENSION 0.700 WAS INCORRECTLY SHOWN AS 0.660.	10/2/06	VM
B		DATUM NAMES CHANGED ON PTS.2, 3, 5 AND 6. TMK	6/25/07	EPC

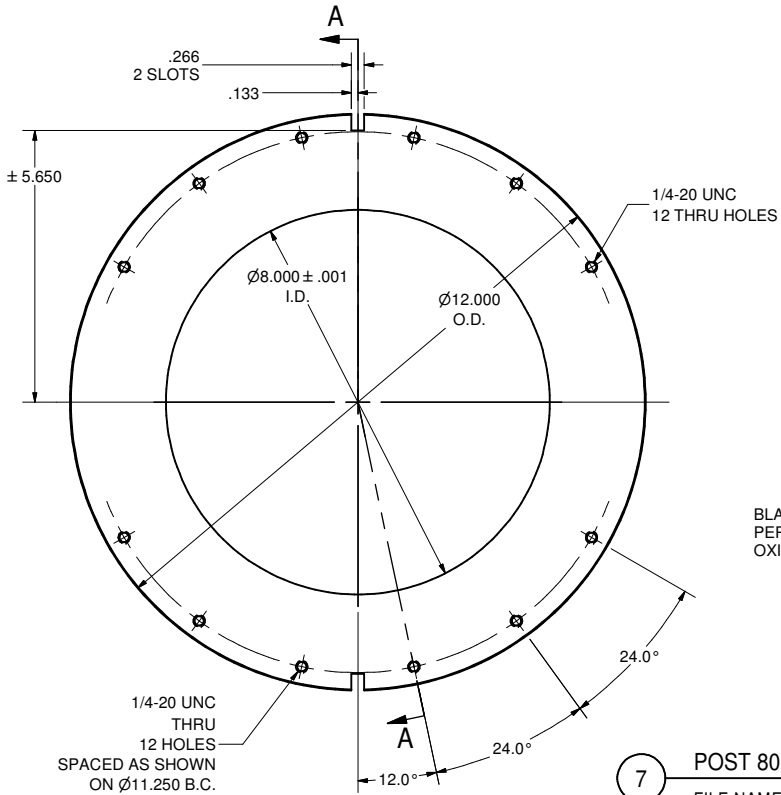
		ITEM	DWG. NO.	DESCRIPTION	G1	G2	G3	REMARKS	REV.
					QUANTITY				
		PLOT DATE: 6/27/2007 CAD FILE NAME: 7110-001.idw							
		CR-1	UNLESS OTHERWISE SPECIFIED: DIMENSIONS ARE IN INCHES: TOLERANCES ON: ± .02 .00 ± .010 .000 ± .005 FRACTIONS ± 1/32 ANGLES ± 0.5° ALL SURFACES 	 LEPP LABORATORY FOR ELEMENTARY-PARTICLE PHYSICS			CORNELL UNIVERSITY Floyd R. Newman Laboratory Ithaca, NY 14853		
7110-001 <small>SH. NO. 2 OF 5</small>		ERL INJECTOR CRYOMODULE 8" POST SUPPORT - POST SUPPORT TUBE + OTHER DETAILS							
		CHECKED BY: VM	DRAWN BY VGV	DRAWN FOR MUL	DATE 07/30/06	SCALE -		7110-001 <small>SH. NO. 2 OF 5</small>	REV. B
		APPROVED BY: ML							

FOR MACHINING LUBRICANT USE ONLY
ALKALINE DETERGENT LUBRICANT CIMSTAR 40
OR EQUIVALENT APPROVED BY CORNELL LEPP

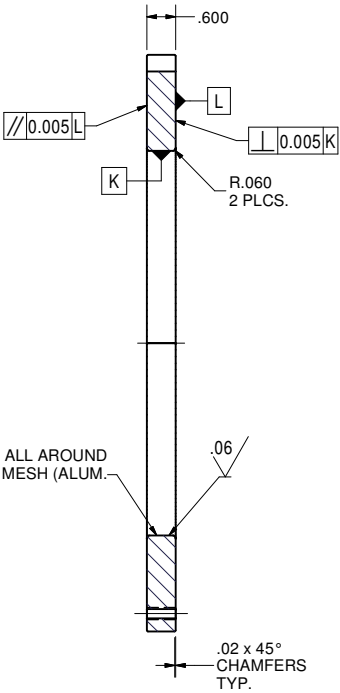
REVISIONS				
SYM.	ZONE	DESCRIPTION	DATE	APP.
A		0.266 IN. SLOTS ADDED TO PARTS ITEM 4 AND 7.	10/2/06	VM
B		Two flats with threaded holes added to PT.9 and datum names changed on PTs.4,7 and 9. VM	6/25/07	EPC



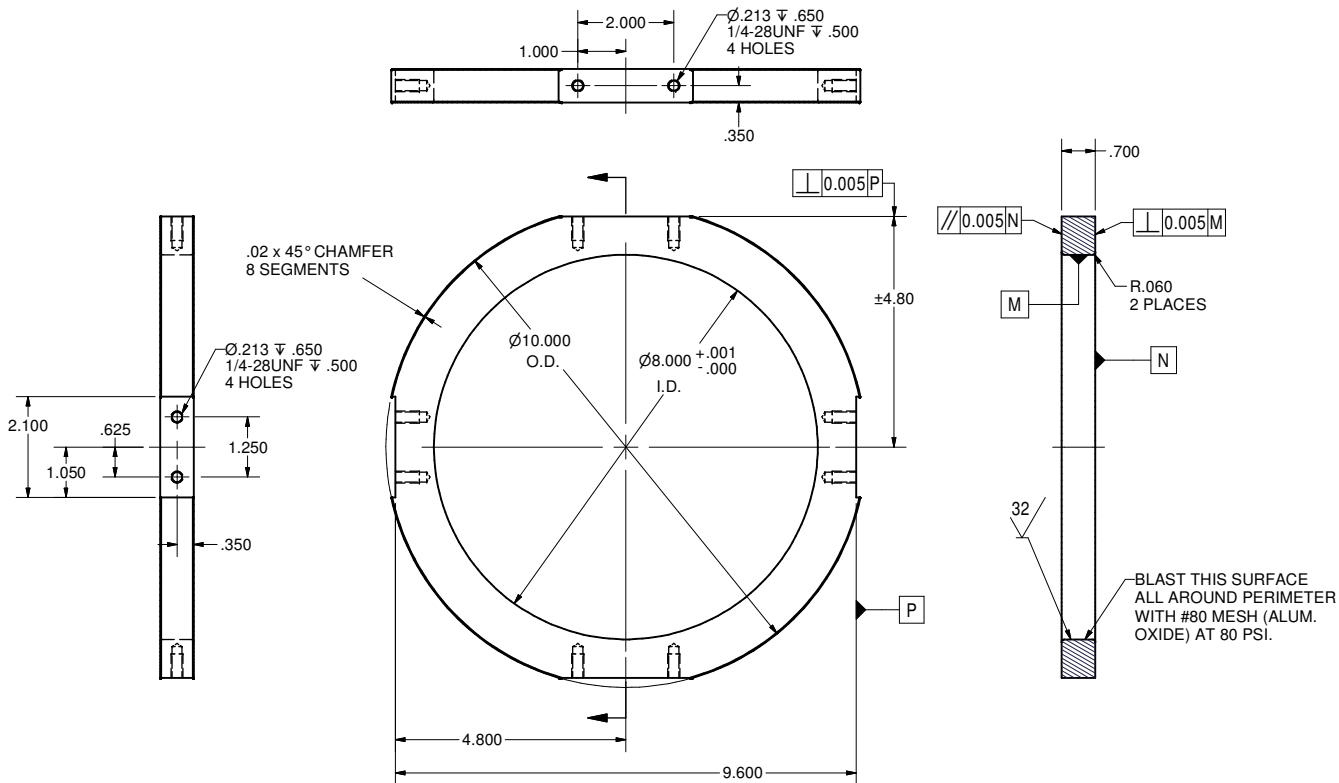
4 POST 5K RING
 FILE NAME: 7110-001
 SHEET NO.: 3
 DFT. SCALE: 1:2
 MATERIAL: 6061-T6 ALUMINUM PLATE
 QTY: 1 PER ASSEMBLY
 NOTES:



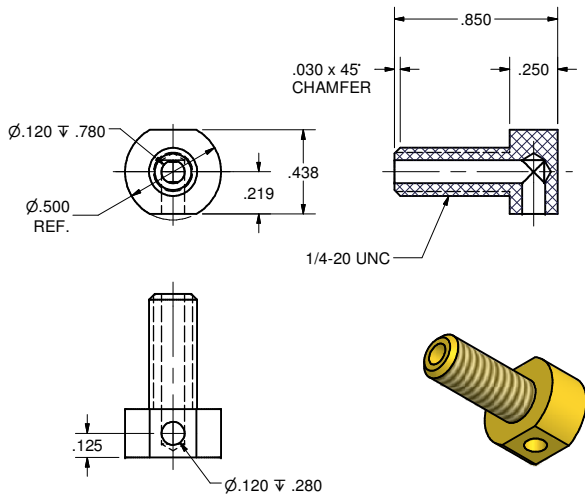
7 POST 80K RING
 FILE NAME: 7110-001
 SHEET NO.: 3
 DFT. SCALE: 1:2
 MATERIAL: 6061-T6 ALUMINUM PLATE
 QTY: 1 PER ASSEMBLY
 NOTES:



SECTION A-A

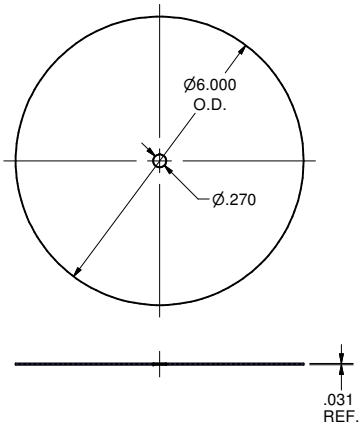


9 POST 300K RING
 FILE NAME: 7110-001
 SHEET NO.: 3
 DFT. SCALE: 1:2
 MATERIAL: 304 STN. STL.
 QTY: 1 PER ASSEMBLY
 NOTES:

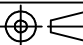
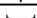







13 POST INSULATION SCREW
 FILE NAME: 7110-001
 SHEET NO.: 3
 DFT. SCALE: 2:1
 MATERIAL: 1/2" G-10 ROD
 QTY: 2 PER ASSEMBLY
 NOTES:

12 POST INSULATION WASHER
 FILE NAME: 7110-001
 SHEET NO.: 3
 DFT. SCALE: 1:2
 MATERIAL: 1/32" G-10 SHEET
 QTY: 2 PER ASSEMBLY
 NOTES:



Release of final PO version for Meyer Tool - June 27, 2007.

		ITEM	DWG. NO.	DESCRIPTION			G1	G2	G3	REMARKS	REV.
					QUANTITY						
	PRINT DISTR.	PLOT DATE: 6/27/2007 CAD FILE NAME: 7110-001.idw									
	 SH. NO. 3 OF 5	CR-1	UNLESS OTHERWISE SPECIFIED: DIMENSIONS ARE IN INCHES; TOLERANCES ON: .0 ± .02 .00 ± .010 .000 ± .005 FRACTIONS ± 1/32 ANGLES ± 0.5° ALL SURFACES 		<div> LEPP</div> <div>CORNELL UNIVERSITY Floyd R. Newman Laboratory Ithaca, NY 14853</div> <div>LABORATORY FOR ELEMENTARY-PARTICLE PHYSICS</div>						
ERL INJECTOR CRYOMODULE 8" POST SUPPORT - POST RINGS AND OTHER DETAILS											
 REV.			CHECKED BY: VM	DRAWN BY	DRAWN FOR	DATE	SCALE		7110-001	SH. NO. 3 OF 5	REV. B
		APPROVED BY: ML	VGW	MUL	07/30/06	-					

CORNELL UNIVERSITY
 LABORATORY FOR ELEMENTARY-PARTICLE PHYSICS

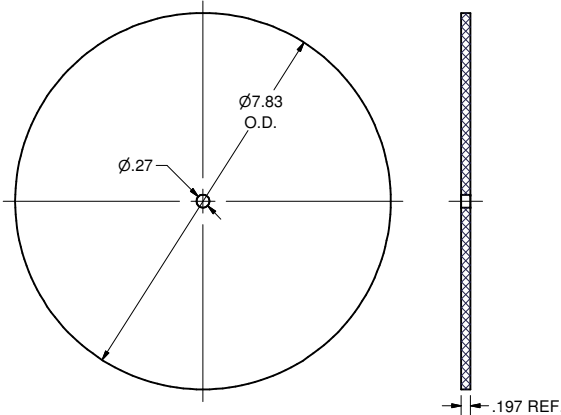
CORNELL UNIVERSITY
 Floyd R. Newman Laboratory
 Ithaca, NY 14853

ERL INJECTOR CRYOMODULE
8" POST SUPPORT - POST RINGS AND OTHER DETAILS

CHECKED BY: VM	DRAWN BY: VGV	DRAWN FOR: MUL	DATE: 07/30/06	SCALE: D	7110-001	REV. B
APPROVED BY: ML					SH. NO. 3 OF 5	

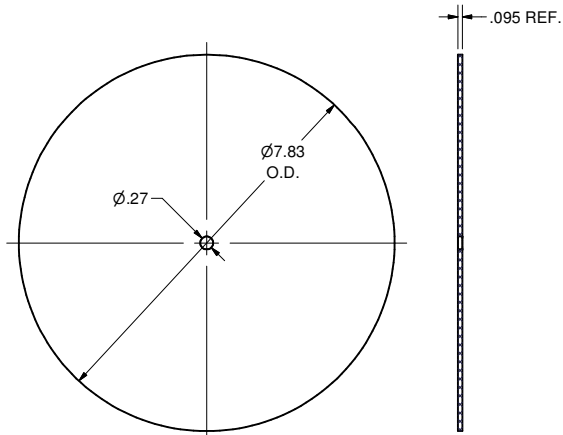
FOR MACHINING LUBRICANT USE ONLY
 ALKALINE DETERGENT LUBRICANT CIMSTAR 40
 OR EQUIVALENT APPROVED BY CORNELL LEPP

REVISIONS				
SYM.	ZONE	DESCRIPTION	DATE	APP.
A	E5	PT.8 DATUM NAMES CHANGED. AND TOL. ON 3.000 DIA. WAS +0.001-0.000 TMK	6/25/07	EPC



14 POST 80K INSULATION DISK

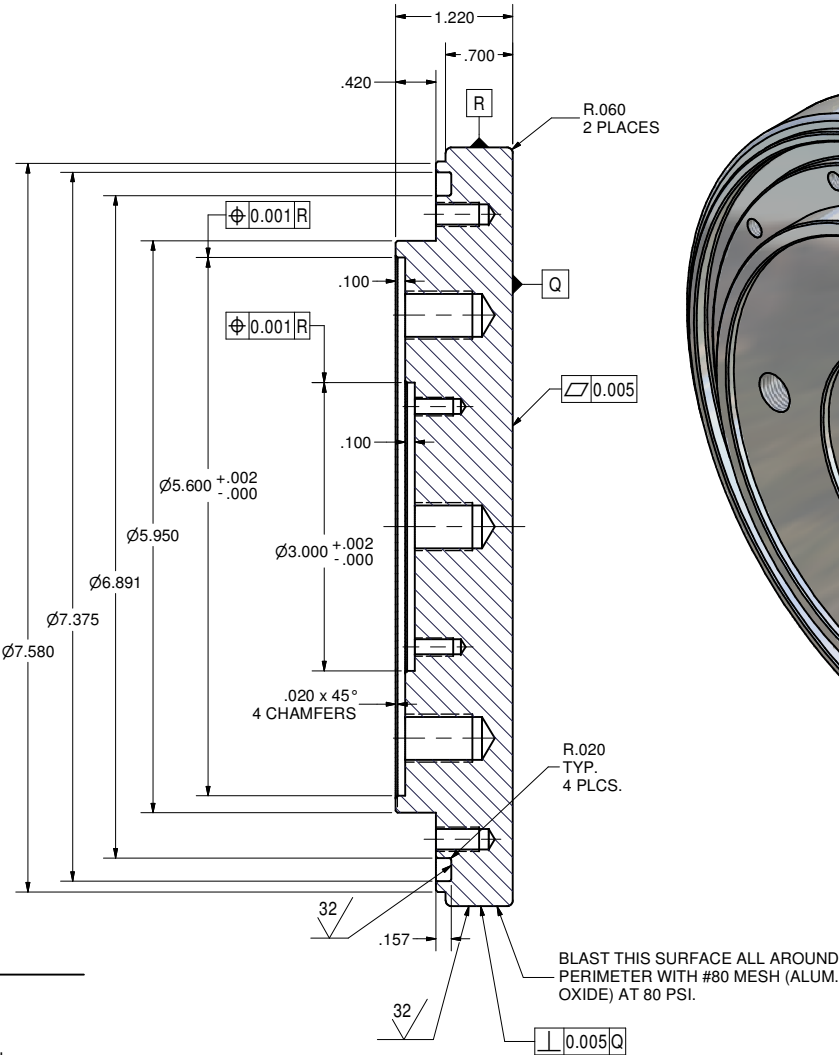
FILE NAME: 7110-001
SHEET NO.: 4
DFT. SCALE: 1:2
MATERIAL: DAM AND RSP (SEE NOTES)
QTY: 1 PER ASSEMBLY
NOTES: DISK BLANKET CONSISTS OF ALTERNATING LAYERS OF DOUBLE ALUMINIZED MYLAR (DAM) AND REEMAY SPUNBONDED POLYESTER (RSP) TO A TOTAL BUILDUP OF 20 LAYERS DAM AND 19 LAYERS RSP.



10 POST 5K INSULATION DISK

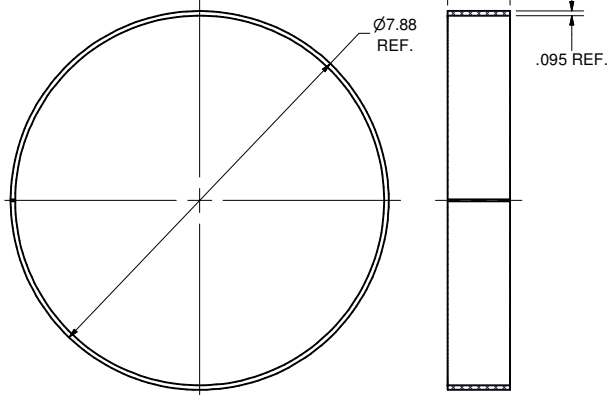
FILE NAME: 7110-001
SHEET NO.: 4
DFT. SCALE: 1:2
MATERIAL: DAM AND RSP (SEE NOTES)
QTY: 1 PER ASSEMBLY
NOTES: DISK BLANKET CONSISTS OF ALTERNATING LAYERS OF DOUBLE ALUMINIZED MYLAR (DAM) AND REEMAY SPUNBONDED POLYESTER (RSP) TO A TOTAL BUILDUP OF 10 LAYERS DAM AND 9 LAYERS RSP.

Release of final PO version for Meyer Tool - June 27, 2007.



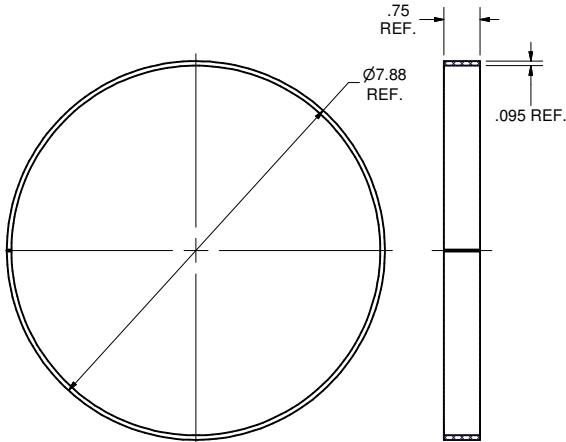
8 POST 300K DISK

FILE NAME: 7110-001
SHEET NO.: 4
DFT. SCALE: 1:1
MATERIAL: 304 STN. STL.
QTY: 1 PER ASSEMBLY
NOTES:



11 POST 5K INSULATION RING


FILE NAME: 7110-001
SHEET NO.: 4
DFT. SCALE: 1:2
MATERIAL: DAM AND RSP (SEE NOTES)
QTY: 1 PER ASSEMBLY
NOTES: RING BLANKET CONSISTS OF ALTERNATING LAYERS OF DOUBLE ALUMINIZED MYLAR (DAM) AND REEMAY SPUNBONDED POLYESTER (RSP) SHEETS OF SIZE 1.30" x 24.75" TO A TOTAL BUILDUP OF 10 LAYERS DAM AND 9 LAYERS RSP.



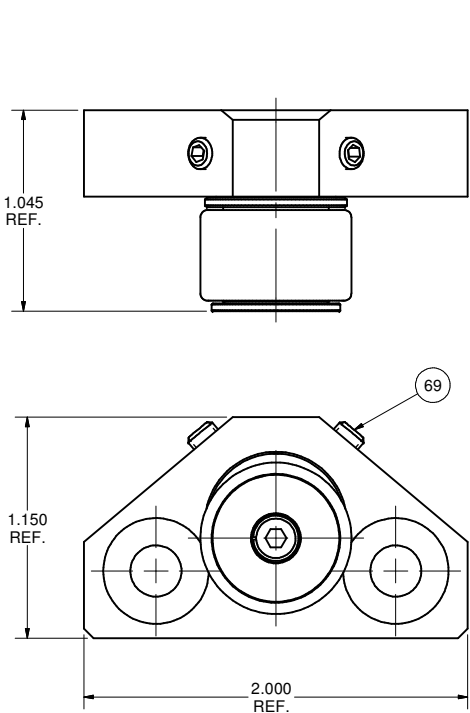
15 POST 80K INSULATION RING

FILE NAME: 7110-001
SHEET NO.: 4
DFT. SCALE: 1:2
MATERIAL: DAM AND RSP (SEE NOTES)
QTY: 1 PER ASSEMBLY
NOTES: RING BLANKET CONSISTS OF ALTERNATING LAYERS OF DOUBLE ALUMINIZED MYLAR (DAM) AND REEMAY SPUNBONDED POLYESTER (RSP) SHEETS OF SIZE 0.75" x 24.75" TO A TOTAL BUILDUP OF 10 LAYERS DAM AND 9 LAYERS RSP.

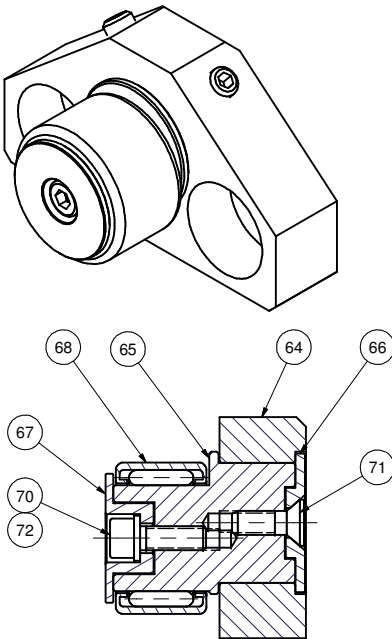
FOR MACHINING LUBRICANT USE ONLY
ALKALINE DETERGENT LUBRICANT CIMSTAR 40
OR EQUIVALENT APPROVED BY CORNELL LEPP

		ITEM	DWG. NO.	DESCRIPTION			G1	G2	G3	REMARKS	REV.
					QUANTITY						
D	PRINT DISTR.	PLOT DATE: 6/27/2007 CAD FILE NAME: 7110-001.idw									
		CR-1	UNLESS OTHERWISE SPECIFIED: DIMENSIONS ARE IN INCHES; TOLERANCES ON: .0 ± .02 .00 ± .010 .000 ± .005 FRACTIONS ± 1/32 ANGLES ± 0.5° ALL SURFACES			<div><div>CORNELL UNIVERSITY</div><div>LEPP</div><div>LABORATORY FOR ELEMENTARY-PARTICLE PHYSICS</div></div> <div>CORNELL UNIVERSITY Floyd R. Newman Laboratory Ithaca, NY 14853</div>					
7110-001 SH. NO. 4 OF 5					ERL INJECTOR CRYOMODULE 8" POST SUPPORT - POST 300K DISK + OTHER DETAILS						
A	REV.	CHECKED BY: VM			DRAWN BY	DRAWN FOR	DATE	SCALE	D	7110-001 SH. NO. 4 OF 5	REV. A
		APPROVED BY: ML			VGW	MUL	07/30/06	-			

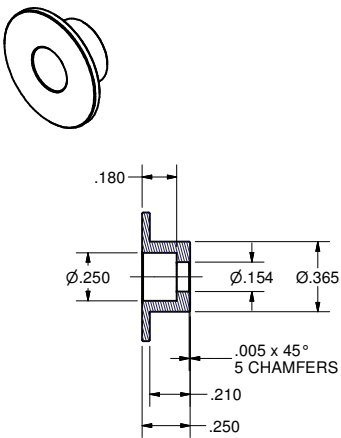
REVISIONS			
SYM.	ZONE	DESCRIPTION	DATE APP.



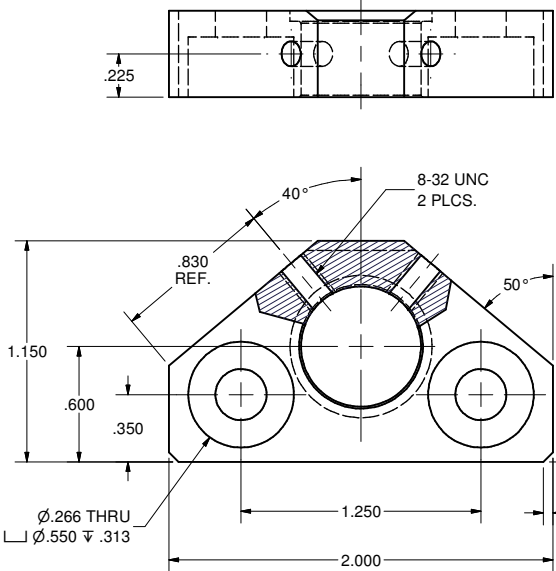
16 POST ROLLER SUBASM
FILE NAME: 7110-001
SHEET NO.: 5
DFT. SCALE: 2:1
MATERIAL:
QTY: 2 PER POST SUPPORT
NOTES: 1. FIX SCREW ITEM 70 WITH EPOXY GLUE.



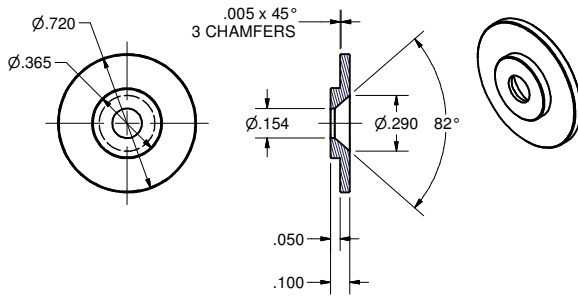
65 POST ROLLER CAM SHAFT
FILE NAME: 7110-001
SHEET NO.: 5
DFT. SCALE: 2:1
MATERIAL: 304 STAINLESS STEEL
QTY: 1 PER SUBASM
NOTES:



67 POST ROLLER FRONT STOP
FILE NAME: 7110-001
SHEET NO.: 5
DFT. SCALE: 2:1
MATERIAL: 304 STAINLESS STEEL
QTY: 1 PER SUBASM
NOTES:



64 POST ROLLER SUPPORT
FILE NAME: 7110-001
SHEET NO.: 5
DFT. SCALE: 2:1
MATERIAL: 304 STAINLESS STEEL
QTY: 1 PER SUBASM
NOTES:



66 POST ROLLER BACK STOP
FILE NAME: 7110-001
SHEET NO.: 5
DFT. SCALE: 2:1
MATERIAL: 304 STAINLESS STEEL
QTY: 1 PER SUBASM
NOTES:

Release of final PO version for Meyer Tool - June 27, 2007.

72	-	#5 Spring Lock Washer	1		St. Steel	
71	-	5-40 x 3/8 Flat Head Cap Screw	1		St. Steel	
70	-	5-40 x 3/8 Socket Hd. Cap Screw	1		St. Steel	
69	-	8-32 x 5/16 Cup Point Set Screw	2		St. Steel	
68	-	14 ID x 20 OD x 12 L mm Needle-Roller Bearing	1		McMaster-Carr's 5905K75	
67	7110-001 (SH. 5)	POST ROLLER FRONT STOP	1			
66	7110-001 (SH. 5)	POST ROLLER BACK STOP	1			
65	7110-001 (SH. 5)	POST ROLLER CAM SHAFT	1			
64	7110-001 (SH. 5)	POST ROLLER SUPPORT	1			
16	7110-001 (SH. 5)	POST ROLLER SUBASM	X			

ITEM	DWG. NO.	DESCRIPTION	QUANTITY	REMARKS	REV.
G1	G2	G3			
7110-001	CR-1	UNLESS OTHERWISE SPECIFIED: DIMENSIONS ARE IN INCHES: TOLERANCES ON: .0 ±.02 .00 ±.010 .000 ±.005 FRACTIONS ±1/32 ANGLES ±0.5° ALL SURFACES			
7110-001	CR-1	CORNELL UNIVERSITY LABORATORY FOR ELEMENTARY-PARTICLE PHYSICS			
7110-001	CR-1	CORNELL UNIVERSITY Floyd R. Newman Laboratory Ithaca, NY 14853			
7110-001	CR-1	ERL INJECTOR CRYOMODULE 8" POST SUPPORT - POST ROLLER DETAILS			
7110-001	CR-1	CHECKED BY: VM APPROVED BY: ML	DRAWN BY: VGV DRAWN FOR: MUL	DATE: 07/30/06 SCALE: D	7110-001 SH. NO. 5 OF 5

FOR MACHINING LUBRICANT USE ONLY
ALKALINE DETERGENT LUBRICANT CIMSTAR 40
OR EQUIVALENT APPROVED BY CORNELL LEPP